



Introducing

Lexmark Markvision Enterprise

Next-generation device management software keeps you in the know.

Lexmark Markvision Enterprise is free browser-based software that gives you complete visibility into your entire fleet of network printers and multifunction devices regardless of manufacturer. The advanced, yet easy-to-use, toolset provides everything you need to efficiently discover, configure, monitor and manage devices throughout their lifecycle.

We've given Markvision a complete makeover

Roles-based design

To coordinate the multiple tasks involved with managing your devices, the software is divided into four service areas: Asset Manager, Policies, Service Desk, and Event Manager. This roles-based design benefits administrators and users alike; administrators can grant access based on individual users' responsibilities, and users are presented with only the features and functions they need to accomplish their jobs. In addition, the software models ITIL® terminology and methodologies, the best practice framework used by IT service managers around the world.

Database-driven foundation

The database-driven foundation is ideal for saving and retrieving information about your fleet. System configuration data and other device information are saved to the database's persistent memory. For greater flexibility, you can locate the database on a remote server or on the server that hosts the Markvision Enterprise software.

New user interface

The user interface meshes outstanding functionality with a superb visual design to provide a user experience that is intuitive, consistent and very easy to use.

Web-based

Once installed, Markvision Enterprise is accessible from anywhere on the network using your Web browser. There is no need to install separate client software.

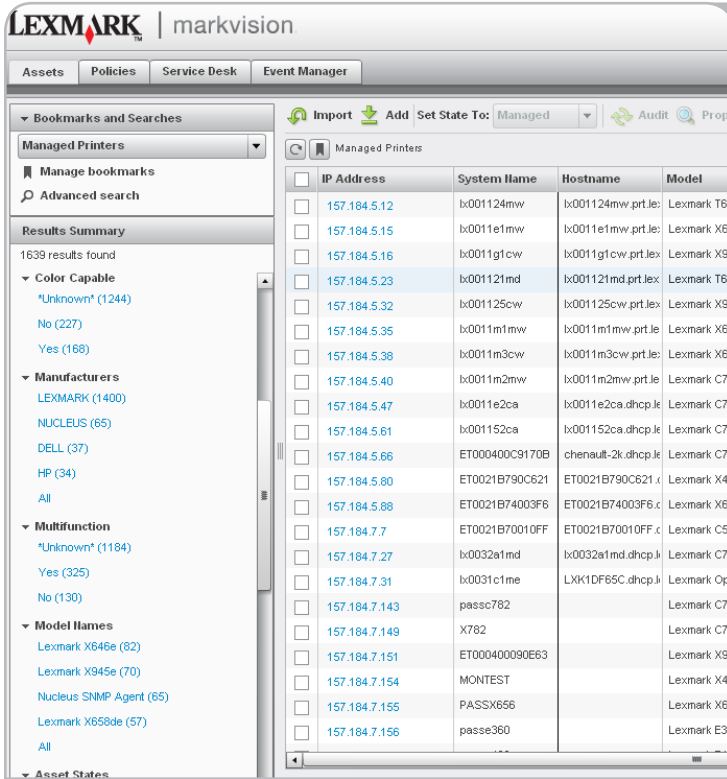
Easy to scale — up or down

Markvision Enterprise lets you centrally manage your entire fleet, whether you have a few devices or thousands. Lexmark testing was reliably conducted with up to 20,000 devices on a single server.

Lexmark Markvision Enterprise: four powerful tools

Four powerful tools to help you manage your output environment more effectively

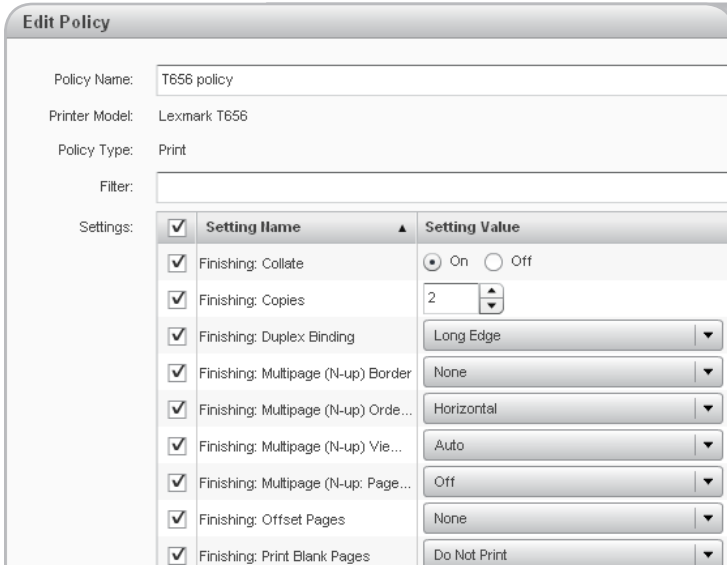
Lexmark Markvision Enterprise device management software lets you track, troubleshoot and manage both Lexmark and non-Lexmark devices throughout their lifecycle, from the moment you connect them to the network until the day you retire them.



Asset Manager

Markvision Asset Manager discovers your devices, collects information from them, and allows you to organize devices into groups so you can perform searches, efficiently schedule tasks and keep track of assets throughout their lifecycle. With Asset Manager, you can:

- **Auto-discover devices** or import a list of your devices.
- **Create discovery profiles** and run them on a scheduled basis to keep your list of assets up to date.
- **Audit devices** to gather information, such as installed features, options, page counts and other statistics.
- **Search and group devices** based on attributes and then bookmark the results so you can access them any time.
- **Track assets throughout their lifecycle** and automatically monitor for changes. The lifecycle states are New, Managed, Managed-Changed, Managed-Missing, Managed-Found, Retired and Unmanaged.
- **Generate inventory reports** in PDF or CSV format to better understand the makeup of your fleet and share information with decision makers.



Policies

Once you have discovered and organized your devices, Markvision Policies makes it easy to configure them, update their settings and ensure the devices remain properly configured over time — all from a central location through your Web browser. With Policies, you can:

- **Create reliable, flexible policies** that define how you want particular models to be configured.
- **Automatically check devices** for conformance against their policy.
- **Enforce policies**, either manually or automatically, to keep devices configured exactly the way you have defined.
- **Update firmware** and automatically ensure devices are kept at the correct firmware level.

Lexmark Markvision Enterprise: four powerful tools

IP Address	System Name	Model	Printer Status	Supply Status	Copy	Email/FTP
157.184.5.12	lx001124mw	Lexmark T656	✓	✓		✓ T656 test
157.184.5.14	lx001123mw	Lexmark X854e	✓	✓	✓ X854e test	✓ X854e test
157.184.5.15	lx0011e1mw	Lexmark X646e	✓	✓	✓ X646e test	✓ X646e test
157.184.5.16	lx0011g1cw	Lexmark X945e	⚠	✓	✓ X945e test	✗ X945e test
157.184.5.23	lx001121md	Lexmark T644	✓	✓		✓ X945e test
157.184.5.32	lx001125cw	Lexmark X945e	✓	✓	✓ X945e test	✓ X945e test
157.184.5.35	lx0011m1mw	Lexmark X644e	✓	✓		
157.184.5.38	lx0011m3cw	Lexmark X846e	✓	✓	? X646e test	? X646e test
157.184.5.40	lx0011m2mw	Lexmark C782 460	✓	✓	✓ C782 policy	✓ C782 policy
157.184.5.47	lx0011e2ca	Lexmark C772	✓	⚠		
157.184.5.61	lx001152ca	Lexmark C762	✓	✓		
157.184.5.88	ET0021B74003F6	Lexmark X856de	✓	✓		
157.184.7.7	ET0021B70010FF	Lexmark C544	✓	✓		

Service Desk

Markvision Service Desk lets you interact with your devices in real time, giving you the tools you need to troubleshoot and correct issues as quickly as possible. With Service Desk, you can:

- **View the status** of a device.
- **View policy information** to quickly identify if the device is in conformance with its policies and enforce them if the settings have been changed.
- **Remotely interact** with the device, either through the device's embedded Web page or through the remote operator panel. Access to the remote operator panel is supported on all newer Lexmark models and allows you to change settings as if you were physically at the device.

Edit Event

Name: Supplies low

Description: Send an email to service when supplies are low

Alerts:

<input type="checkbox"/>	Name	Type	Severity
<input type="checkbox"/>	Supply Alert	Supplies	Error
<input type="checkbox"/>	Supply Calibrating	Supplies	Error
<input checked="" type="checkbox"/>	Supply Empty	Supplies	Error
<input type="checkbox"/>	Supply Full	Supplies	Error
<input type="checkbox"/>	Supply Full Or Missing	Supplies	Error
<input type="checkbox"/>	Supply Jam	Supplies	Error
<input checked="" type="checkbox"/>	Supply Low	Supplies	Error
<input type="checkbox"/>	Supply Missing	Supplies	Error

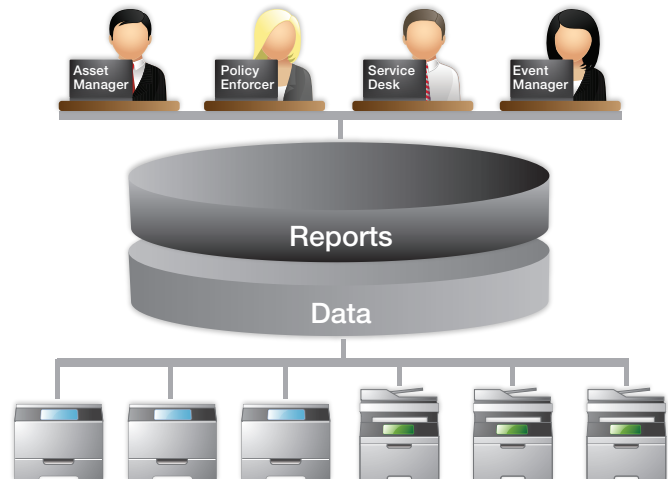
Event Manager

Whereas Service Desk allows you to intervene when a problem occurs, Markvision Event Manager helps you intercept issues by proactively monitoring your devices, alerting you of events, and launching automatic actions when those events occur. With Event Manager, you can:

- **Listen for events** in your fleet, such as low consumables or error conditions.
- **Automate your response** to an event once the alert is received using either an e-mail notification or, if a custom action is required, an executable command line.

Designed for IT

Markvision Enterprise is a Web-enabled client server device management application designed for IT professionals. The server discovers and communicates with devices on your network, and provides the information to the client. The client displays the information through an intuitive, roles-based interface so you can easily manage and report on your devices.



Drives costs down, agility up

Your organization demands high performance and high availability from its output fleet. Lexmark Markvision Enterprise helps you deliver.

Save time and reduce costs

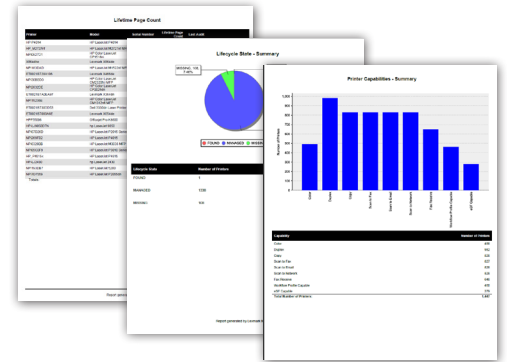
Discover, configure and monitor networked printers and multifunction devices throughout your enterprise, all from a central location. There is no client application to install. Markvision Enterprise is Web-based, allowing you to access the toolset from anywhere.

Maximize your investment

Reduce downtime with proactive event management. Stay ahead of issues with automatic alerts based on problem conditions, such as low consumable levels or error states.

Be more efficient

Use scheduling and policies to automatically keep your fleet information up to date and to keep your devices configured in the way you have defined.



Make informed decisions

Robust reporting capabilities provide information on device makes, models, capabilities and usage statistics. Reports can be generated in PDF or CSV format for easy export and sharing.

Technical Specifications

RAM

- Required: 1GB (2GB or more recommended)

Processor speed

- Required: One physical 2GHz (3GHz or higher recommended)

Computer hard drive

- At least 60GB available storage space

Supported operating systems

- Windows x64 Edition only
 - Windows Server 2008 R2 (Windows 7 Server)
- Windows x64 and x86 Editions
 - Windows 7
 - Windows Server 2003 R2
 - Windows XP
- Virtualization
 - VMWare ESX 3.5 U5
 - VMWare vSphere 4 U1

Note: Make sure you have installed the latest patches or updates for your operating system.

Supported Web browsers

- Microsoft Internet Explorer 7.x and 8.x
- Mozilla Firefox 3.x
- Apple Safari 4.x

Note: The application requires Adobe Flash Player 10.0, which is not supported in 64-bit Web browsers. If you are using a 64-bit operating system, then you need to use a 32-bit Web browser to run the application.

Supported databases

- Firebird
- Microsoft SQL Server 2005 and 2008

Note: The application supports only the 32-bit versions and comes with a pre-configured Firebird database.

Getting Started

Download Lexmark Markvision Enterprise for free at www.lexmark.com/markvision.

Print Less. Save More.

www.lexmark.com

LEXMARK
TM